



REGD. TRADE MARK

1970
SELECTION
of the
BEST

TOYS & NURSERY FURNITURE

EVER
MADE
in
AUSTRALIA

BESTOYS SUPPLY WHOLESALERS ONLY

FOR PROMPT SERVICE CONTACT:



BESTOYS are incomparable in value and are made of the highest quality material with the most exclusive design.

INDEX

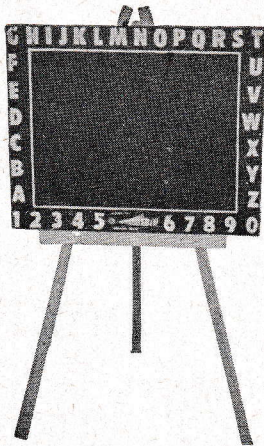
	Page No.
<u>TOY ITEMS</u>	
HOBBY HORSE	3
BLACKBOARDS	3 & 4
GARAGES	5
BOBS SETS	5
COTS AND CRADLES	6 & 7
DOLL'S FURNITURE	6 & 7
DOLL'S HOUSES	8
ROCKAWAYS	9
 <u>CHILDREN'S FURNITURE</u>	
TABLES AND CHAIRS	10, 11 & 12
FOLDING TABLE AND CHAIRS	12
DESKETTES	13
DESKS AND STOOLS	13, 14 & 15



**B/T 002 BESTOYS SQUIRREL
WALL BLACKBOARD**

Carefully designed caricaturistically with an attractive squirrel head with letters and numbers silk-screened in two colours. Overall size: 24" x 12".

PRICE.....



**B/T 003 BESTOYS
No. 3 BLACKBOARD**

Easel, 36" in height, made of 1" solid timber with chalk rack. Board 20" x 16", with alphabet and numbers.

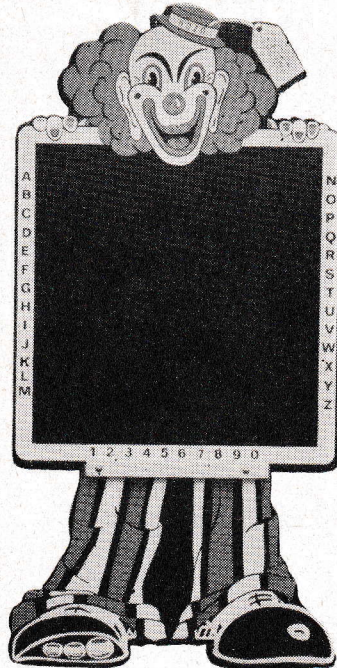
PRICE.....



**B/T 001 BESTOYS
HOBBY HORSE**

Strongly constructed of the best material with 1/4" Corinite laminated plastic hardboard head in attractive woodgrain patterns. Carefully coloured and designed. Packed 12 to a carton.

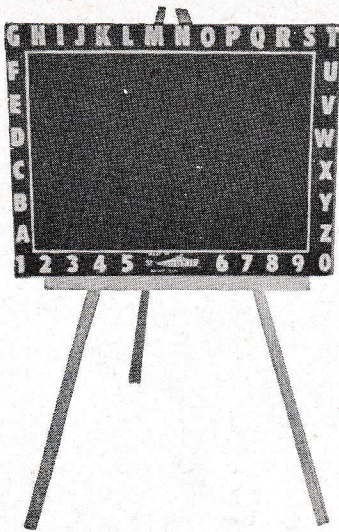
PRICE.....



**B/T 005 BESTOYS
"BOZO" BLACKBOARD**

Every pre-schooler has an anxiety to learn and to scribble with chalk. Up to date, only simple, ordinary blackboards were offered in the market, neglecting the imagination for stimulating the desire of revealing their artistic qualities. With this in mind, BESTOYS again with their ingenuity, have designed this blackboard in the semblance of a joyful clown. Made of sturdy 5/16" hardboard with a hinged leg for standing up. Board gaily decorated with two bright colours and clearly distinguishable letters and numbers. Overall size: 36" x 18".

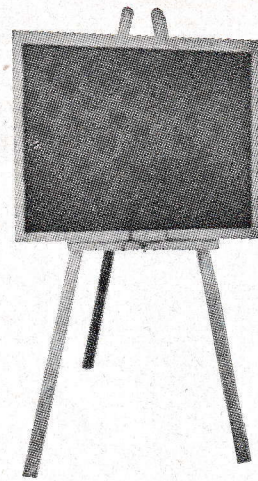
PRICE.....



**B/T 004 BESTOYS
No.2 BLACKBOARD**

Easel, 40" in height, made of 1" solid timber with chalk rack. Board 24" x 18", with alphabet and numbers.

PRICE.....



**B/T 006 BESTOYS LARGE
BLACKBOARD**

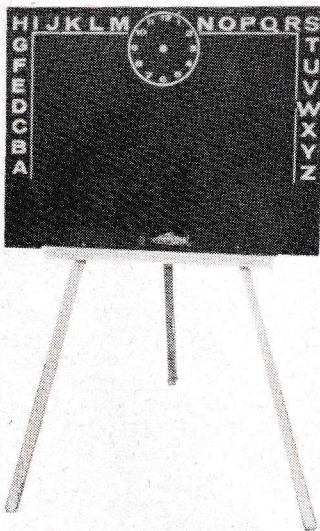
Made of 1" solid timber with chalk rack. Height of easel, 45". Board 25" x 19".

PRICE.....

**B/T 007 BESTOYS DOUBLE
BLACKBOARD**

Sizes as above. Board painted both sides black for double use.

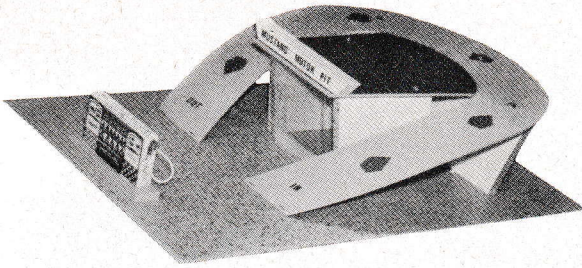
PRICE.....



**B/T 004 BESTOYS ABC TIME
TEACHER BLACKBOARD**

Easel 40" high made of 1" timber with chalk rack. Board 24" x 18" with silk-screened alphabet and numbers and clock face so children can draw the hands and learn the time.

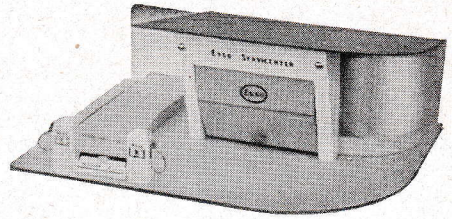
PRICE.....



**B/T 008 BESTOYS
"MUSTANG MOTOR PIT"**

A modern service station with a base of 24" x 16". Horse-shoe-shaped roof with twin ramps and roof parking. Large display window describes this as the most unique service station. Packed in a convenient carton, 24" x 16" x 6".

PRICE.....



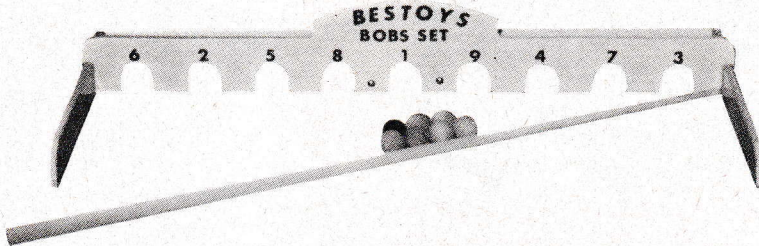
**B/T 009 BESTOYS
"MEDIUM" SERVICE STATION**

A modern service station with a large curved display window. A lift-up door, service ramp and dual pumps. Overall size, 21½" x 16" x 8". Packed in convenient carton.

PRICE.....



BESTOYS BOBS SET

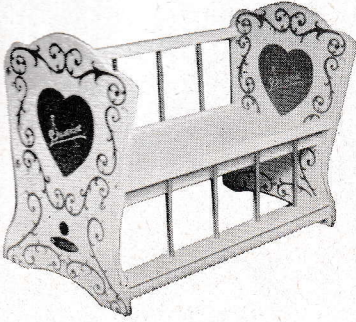


B/T 010 BESTOYS BOBS SET

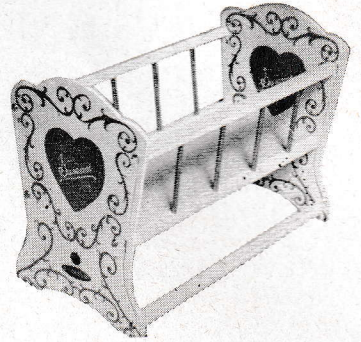
For the past 12 years, since we discontinued this line, we were asked to re-introduce it and now, with pleasure, we are doing so at a competitive price and with our special touch of luxury make this 32" bobs set the most sophisticated obtainable. Complete with a 36" cue, capped with a nylon tip and with a set of seven balls. Packed in a convenient carton.

PRICE.....

**B/T 012 BESTOYS
"SUSANNE" DROP SIDE
COT**



The simplicity of the sliding side of this cot is a unique feature created and used exclusively by BESTOYS. Solidly constructed, beautifully coloured and carefully decorated in white and gold lacquer to simulate wood carved antique finish. Overall size: length 24", height 18", width 13". Packed in convenient carton, 25" x 14" x 3".

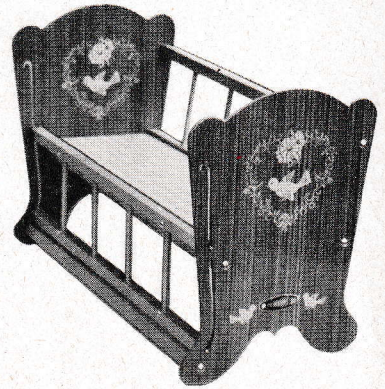


PRICE.....

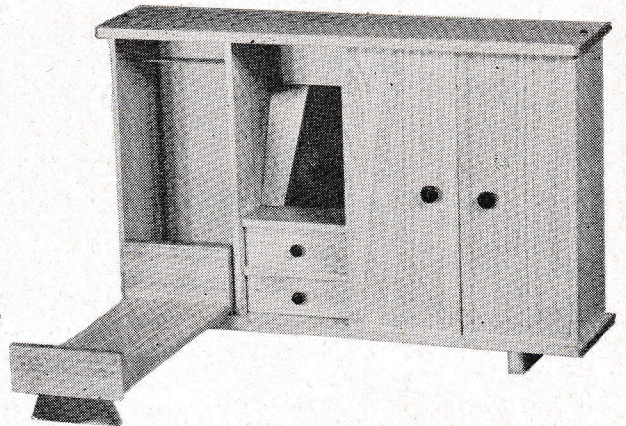
**B/T 013 BESTOYS
"FAIRY" DROP SIDE
COT**



This is a replica of the "SUSANNE" DROP SIDE COT, the variation is the material used for the ends which is beautiful Corinite woodgrain laminated plastic, smoothly finished with gold lacquer trimming and matching decoration. Overall size: height 17½", width 13", length 24½". Packed in convenient carton, 25" x 14" x 3".



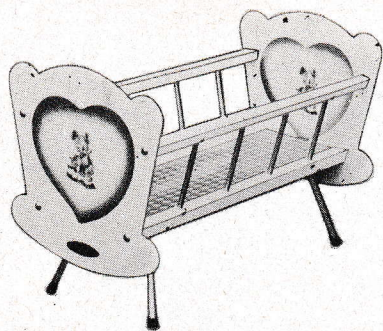
PRICE.....



B/T 016 BESTOYS "CONTESSA" COMBINATION

This combination wardrobe, dressing table and bed is another proof of the serviceability of BESTOYS exclusive products. It is designed to give full play value as well as modern appearance. Consists of a large wardrobe combined with dressing table and folding bed. Constructed of Corinite laminated board and obtainable in various woodgrain colours. Overall size: 15½" high, 22" wide and 6" deep. Packed in convenient carton.

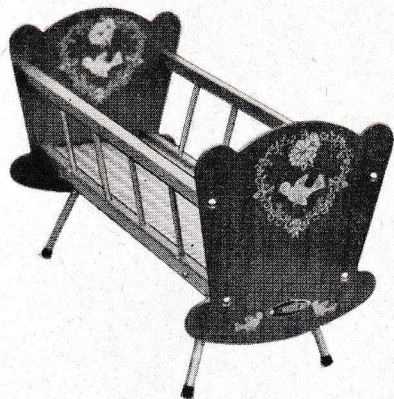
PRICE.....



**B/T 014 BESTOYS "COMBI"
DOLL'S COT AND CRADLE**

This special two-way combination has already proved itself in popularity, because of the unique simplicity of conversion from cot to cradle. Attractively finished in two matching tones. Available in pink or blue. Overall size: 20" high, 24½" long, 13" wide. Packed in convenient carton, 25" x 14" x 3".

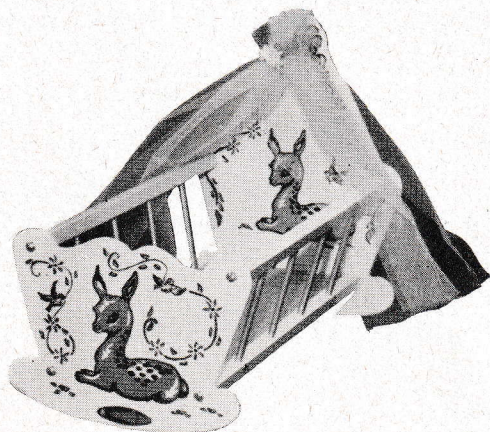
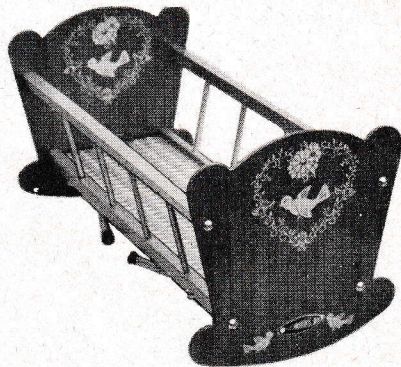
PRICE.....



**B/T 015 BESTOYS
"CAPRICE" COT AND
CRADLE**

This is a replica of the "COMBI" COT AND CRADLE, the variation is the material used for the ends which is beautiful Corinite laminated plastic in woodgrain patterns and combined with gold trimmings and nicely decorated. Overall size: 17" high, 13" wide and 24½" long. Packed in convenient carton: 25" x 14" x 3".

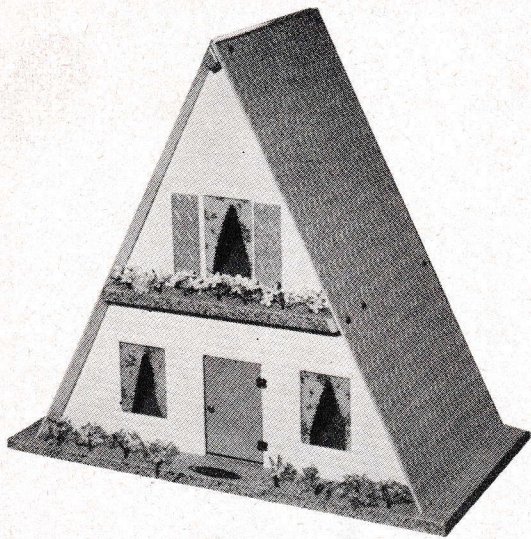
PRICE.....



**B/T 011 BESTOYS
"LULLABYE" CRADLE**

Solidly constructed, smoothly finished and highly decorated with an attractive motif on the two ends. Obtainable in pink or blue. Overall size: Height 18", width 13", length 24½". Packed in a convenient carton, 25" x 14" x 3".

PRICE.....



B/T 017 BESTOYS
"CINDERELLA" DOLL'S HOUSE

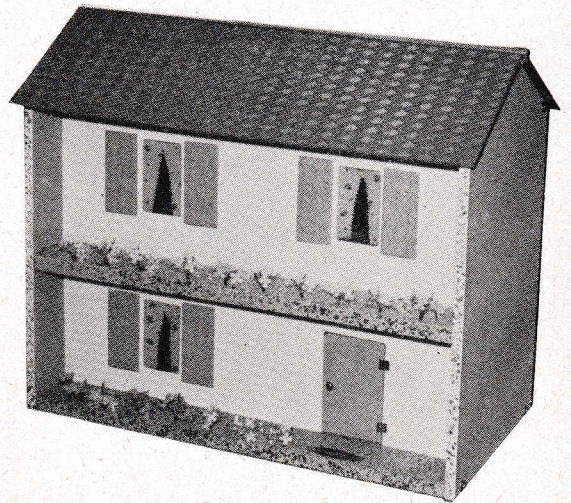
This beautiful doll's house of "A" frame style comprises three rooms completely accessible from the back and gaily coloured. Balcony and front garden are decorated with colourful artificial flowers. Overall size: height 21", width 24", depth 12". Individually packed.

PRICE.....

B/T 018 BESTOYS
NEW "LAURA" DOLL'S HOUSE

Every little girl has different wishes about toys, but the only dream they have in common is a lovely doll's house. BESTOYS have made their desire become a reality by carefully designing this beautiful two storey doll's house, containing four large rooms completely accessible from the back, and verandahs gaily decorated with artificial flowers. Overall size: width 24", height 21½", depth 13". Packed in convenient carton, 24" x 17½" x 3".

PRICE.....

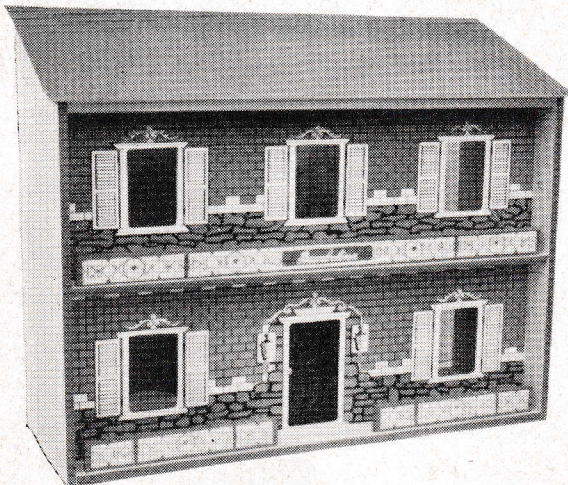


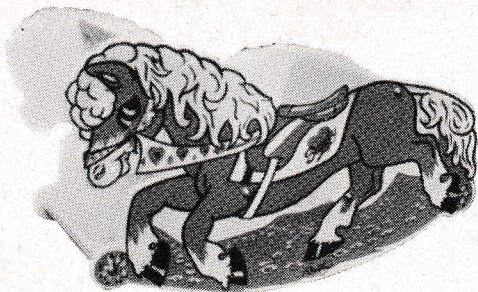
B/T 019 BESTOYS "BAMBOLINA"
DOLL'S HOUSE

The popularity of BESTOYS Products is increasing continually and has been proved by the various successes of the past years and with the great demand from the public for creating new designs. Amongst those demands, several were referring to the creation of a large and roomier doll's house which now BESTOYS proudly introduces to the Australian market.

Constructed mainly of Pyneboard and hardboard, fully, and gaily decorated, imitating the appearance of a colonial mansion. Consists of 6 spacious rooms with verandahs, sliding front door and completely accessible from the back. These features make this doll's house the most attractive ever introduced. Overall size: width 34", height 26", depth 12". Packed in convenient carton. Size: 35" x 24" x 2½".

PRICE.....





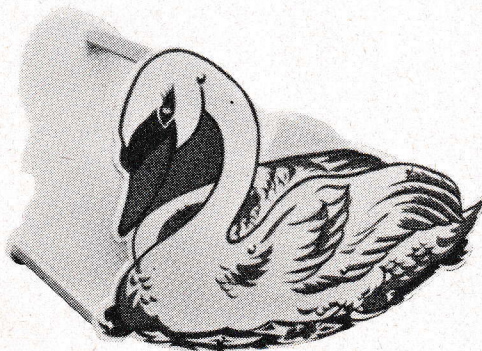
B/T 020 BESTOYS HORSE



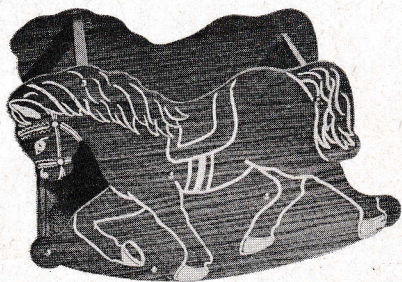
BESTOYS ROCKAWAYS

The ultimate in design of rockaways now introduced by BESTOYS will no doubt increase the public interest immensely. Strongly made and carefully designed, with smooth edges, finished in colourful wear-resistant lacquer, artistically decorated with silk-screen enamel. Obtainable in pink or blue and packed in convenient carton, 27³/₄" x 15¹/₂" x 2".

PRICE.....



B/T 021 BESTOYS SWAN



B/T 022 BESTOYS POLO PONY

B/T 022 BESTOYS POLO PONY

Strongly made and carefully designed and shaped to give plenty of action and improved safety. Smooth finish throughout. Mainly constructed of Corinite laminated plastic in attractive woodgrain pattern decorated with silk-screen enamel and internally gold finished. Packed in convenient carton, 28" x 17" x 2".

PRICE.....

B/T 023 BESTOYS
TUBULAR TABLE AND CHAIRS

Consists of 1 table and 2 chairs smoothly finished and constructed of black-coated $\frac{5}{8}$ " tubular steel legs. Table top made of $\frac{3}{4}$ " woodgrain or white washable Corinite plastic surface trimmed with plastic edging for protection. Seat and back made of $\frac{1}{4}$ " Corinite plastic surface to match. Available in various colours and packed in convenient carton.



PRICE.....

Extra chairs.....each



REGD. TRADE MARK



B/T 026 BESTOYS
DE-LUXE TUBULAR TABLE AND CHAIRS

Consists of 1 table and 2 chairs smoothly finished and constructed of chrome or gold $\frac{5}{8}$ " tubular steel legs. Table top made of $\frac{3}{4}$ " wood-grain washable Corinite plastic surface trimmed with plastic edging for protection. Seat and back made of $\frac{1}{4}$ " Corinite plastic surface to match. Available in various colours and packed in convenient carton.

PRICE.....

Extra chairs.....each

B/T 024 BESTOYS

**"KITCHENETTE" TABLE
AND 2 CHAIRS**

Consists of 1 table and 2 chairs smoothly finished and solidly constructed of black coated $\frac{5}{8}$ " tubular steel legs. Table top 24" x 16", made of $\frac{3}{4}$ " Corinrite, laminated with the latest woodgrain plastics. Trimmed with plastic edging. Seat and back of chairs padded with plastic foam and upholstered with attractive matching vinyl. Available in various colours and packed in convenient carton.



PRICE.....

Extra chairs to match.....each

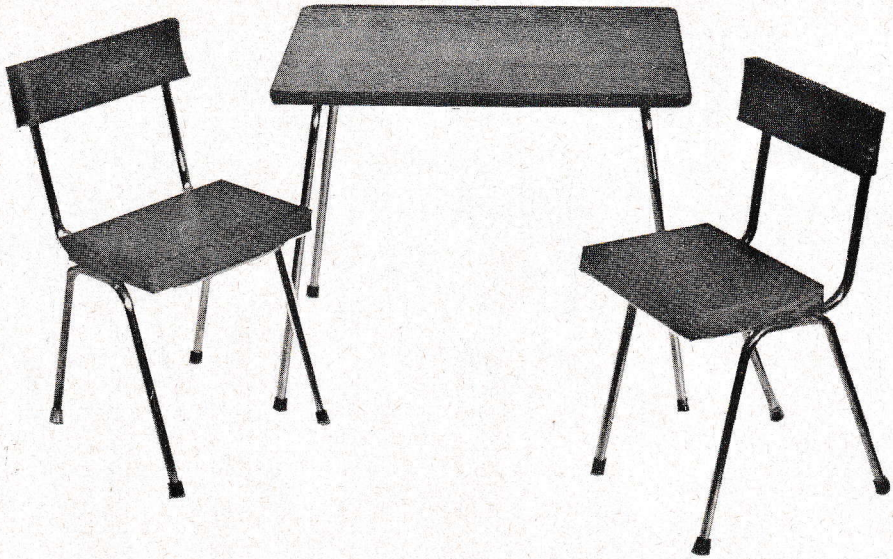


**B/T 025 BESTOYS
FORMICA TABLE
AND 2 CHAIRS**

Consists of 1 table and 2 chairs smoothly finished and constructed of black-coated $\frac{5}{8}$ " tubular steel legs. Table top laminated with Formica washable plastic and trimmed with plastic edging for protection. Seats and backs of chairs padded with plastic foam and upholstered with attractive matching vinyl. Obtainable in blue, red or yellow. Packed in convenient carton.

PRICE.....

Extra chairs.....each



B/T 028 BESTOYS "DINETTE" TABLE AND 2 CHAIRS

Consists of 1 table and 2 chairs smoothly finished and constructed of chrome- or gold-plated $\frac{5}{8}$ " tubular steel legs. Table top made of $\frac{3}{4}$ " woodgrain or white washable Corinite plastic surface trimmed with plastic edging for protection. Seats and backs of chairs padded with plastic foam and upholstered with attractive matching vinyl, in carton.

PRICE.....Extra chairs to match.....each



B/T 030 BESTOYS FOLDING TABLE AND CHAIRS

This easy to operate folding table and two chairs set is a must for the smaller household as it folds away when not in use, for space convenience. Frame strongly constructed of $\frac{5}{8}$ " tubular steel coated with black plastic paint. Table top, 24" x 16", is made of solid $\frac{3}{4}$ " Corinite laminated plastic flakeboard with the most modern woodgrain patterns and trimmed with plastic edging for protection. Seats and backs of the chairs are made of $\frac{1}{4}$ " Corinite laminated plastic hardboard to match. Packed in convenient carton.

PRICE.....Extra chairs to match.....each

B/T 031 BESTOYS DE-LUXE CHROME FOLDING TABLE AND CHAIRS

Description as above with chrome or gold tube legs. Packed in convenient carton.

PRICE.....Extra chairs to match.....each



REG. TRADE MARK



B/T 033 BESTOYS "TODDLER" DESKETTE

Once more, BESTOYS proved their designing supremacy with this new, exclusive Deskette Set, especially created to revive the excitement of learning in the smaller children while playing. Constructed of Corinite laminated plastic flakeboard in attractive woodgrain patterns with gold painted edges. Hinged beneath the desk for storing books, etc. Framework strongly made of $\frac{5}{8}$ " tubular steel, coated in black plastic paint. Overall size: 15" x 21 $\frac{1}{2}$ " x 25". Packed in convenient carton.

PRICE.....

B/T 034 BESTOYS DE-LUXE "TODDLER" DESKETTE

Description as above with chrome or gold tubular framework.

PRICE.....

B/T 035 BESTOYS

"SCHOLAR" DESK AND STOOL

Constructed of Corinite laminated plastic flakeboard in modern woodgrain patterns with Corinite laminated plastic hardboard lift-up lid in a contrasting woodgrain colour and matching stool. Legs are made of $\frac{3}{4}$ " black-coated tubular steel, fitted with swivel ferrules for floor protection. Overall size: 28 $\frac{1}{2}$ " x 23 $\frac{1}{2}$ " x 17". Packed in convenient carton.

PRICE.....



B/T 036 BESTOYS DE-LUXE

"SCHOLAR" DESK AND STOOL

Description as the "SCHOLAR" DESK AND STOOL, with chrome or gold steel legs fitted with swivel ferrules.

PRICE.....



B/T 037 BESTOYS

"VICTORY" DESK AND STOOL

The modifications made from the previous "VICTORY" DESK AND STOOL well proved for its popularity, was adapted to create this De-Luxe version to consolidate leading the field of design and styling for which BESTOYS have always been renowned. Solidly constructed of white or woodgrain Corinite washable laminated plastic and trimmed with plastic edging with chrome or gold legs with swivel ferrules, lift-up lid, inkwell and two pencil grooves, supplied with upholstered stool to match. Overall size: height 30", width 24", depth 18". Packed in convenient carton.



PRICE.....



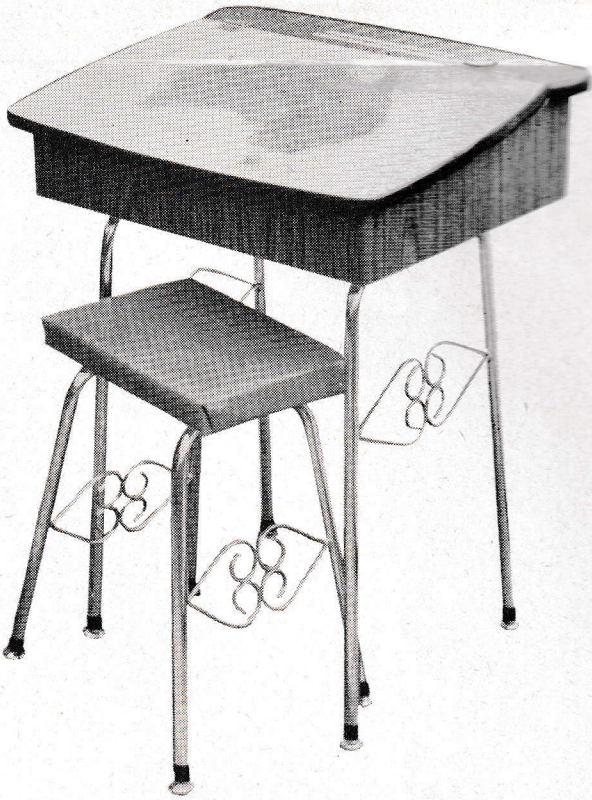
B/T 038 BESTOYS

"AUSTRALIA VICTORY" DESK AND STOOL

Description and size same as above with attractive map of Australia on lid.



PRICE.....



**BESTOYS "SCHOOL MATE"
DESK AND STOOL**

The admiration received throughout Australia for the BESTOYS "SCHOOL MATE" DESKS AND STOOLS has been tremendous and now (in addition to this jubilant success) BESTOYS have exceeded themselves in creating the luxurious version with the option of chrome or gold legs with swivel ferrules. Solidly constructed of white or woodgrain Corinite laminated washable plastic and trimmed with plastic edging, lift-up lid, inkwell and two pencil grooves. Overall size: height 32", width 24", depth 20". Packed in convenient carton. Obtainable as follows:

B/T 039 No. 1, Plain Price

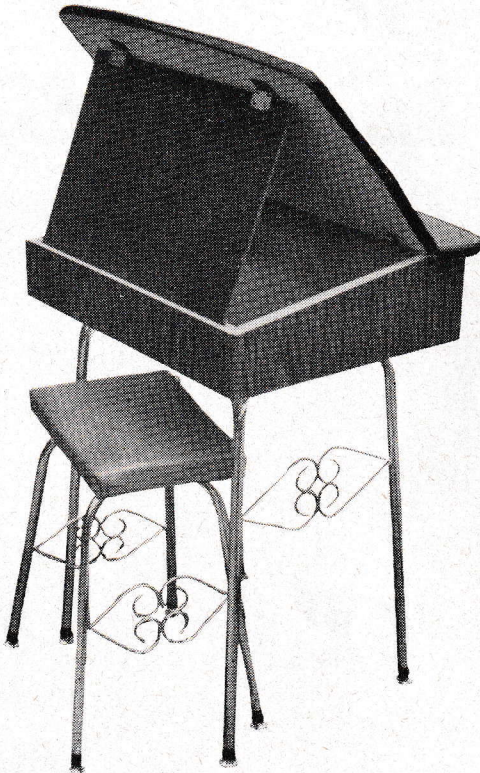
B/T 040 No. 2, With Blackboard Price

B/T 041 No. 3, With Map of Australia

Price

B/T 042 No. 4, Blackboard and Map

Price





**"Yes
Insist on *BESTOYS*
Branded Products"**



REGD. TRADE MARK